



RENEGADE LIGHT BAR  
INSTALLATION INSTRUCTIONS  
LB1237



PUB0050

## PARTS LIST/TOOLS REQUIRED

PARTS LIST		
PART #	QTY.	DESCRIPTION
BL1103	3	RH Light- Red
BL1104	3	LH Light- Red
GT1800	10.5'	Edge Trim- Black
S001245	1	Extension Wire
S001255	1	Light Bar Harness
S001604	1	Renegade Light Bar
<b>S001247</b>	<b>1</b>	<b>Bolt Bag</b>
CN3040	4	NUT NL .25-20 ZN
CS4031	4	SCR BN SK .25-20 X 1.50 ZN
CS4074	12	SCR PN PH 6-32 X .38 SS
CW2006	8	WSH FL .25 SS
CW2042	12	WSH LK #6 SS
CW2084	12	WSH FL #6 SS
CW2093	2	WSH .25 RB
GH0023-5	1	CONNECTOR, 3 PIN FEMALE
GH0023-8	3	TERMINAL, MALE

TOOLS REQUIRED	
QTY.	DESCRIPTION
1	3/8" Ratchet
1	7/16" Deep Socket
1	5/32" Allen Wrench
1	Phillips Screwdriver
1	1/4" Drill Bit
1	Cordless Drill
1	Wire Stripper/Cutter

REPLACEMENT BULBS	
BULB #	DESCRIPTION
161	Tail/Run Light
168	Brake Light

© 2007. All rights reserved.

Lehman Trikes® provides this publication as is without warranty of any kind, either expressed or implied. While every precaution has been taken in the preparation of this manual, Lehman Trikes® assumes no responsibility for errors or omissions. Neither is any liability assumed for damages resulting from the use of the information contained herein. Lehman Trikes® reserves the right to revise and improve its products as it sees fit. This publication describes the state of this product at the time of its publication, and may not reflect the product in the future. Lehman Trikes® is a registered trademark. All other brands and product names are trademarks or registered trademarks of their respective holders. *Printed in the United States of America.*

# SAFETY INFORMATION

## UNDERSTANDING SAFETY LABELS & INSTRUCTIONS

READ AND BECOME FAMILIAR WITH ALL WARNING, CAUTION SYMBOLS AND STATEMENTS LISTED BELOW AND IN THE TEXT OF THIS MANUAL BEFORE YOU BEGIN WORK.

### DANGER, WARNINGS & CAUTION SYMBOLS



This is the safety alert symbol. When you see this symbol on your machine or in this manual, be alert to the potential for personal injury. Your safety is involved!



#### **WARNING**

SAFETY ALERT WARNING indicates a potential hazard that may result in severe injury or death to the operator, bystander or person (s) inspecting or servicing the vehicle.



#### **CAUTION**

Indicates a potential hazard that may result in minor personal injury or damage to the vehicle.

#### **CAUTION**

CAUTION indicates special precautions that must be taken to avoid vehicle damage or property damage.

#### **NOTE:**

NOTE provides key information by clarifying instructions.

#### **IMPORTANT:**

IMPORTANT provides key reminders during disassembly, assembly and inspection of components.

# INSTALLATION

1. **See Fig. 1.** Install black rubber trim around light bar starting on the lower middle edge. Make sure trim has a straight edge before installing.
2. **See Fig. 2.** Hold light bar against body. Follow lower body cutout too fit light bar. Make sure light bar is centered on body.

**NOTE: If light bar is mounted to high on body, possible interference may occur when trunk door is open.**

1. Mark the inner and outer mounting holes with a scribe or marker.
2. Drill mounting holes using a 1/4" drill bit.

**CAUTION: Use care while drilling painted surfaces.**

5. **See Fig. 3.** Drill another 1/4" hole for wire harness in lower body panel on RH side.

**NOTE: Make sure wire harness hole will be covered by light bar.**

Fig. 1

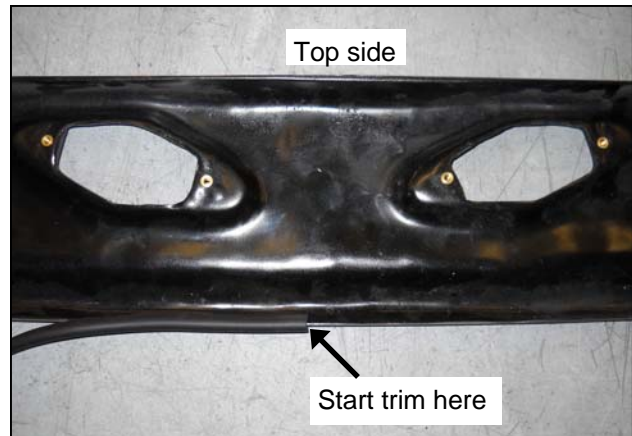


Fig. 2

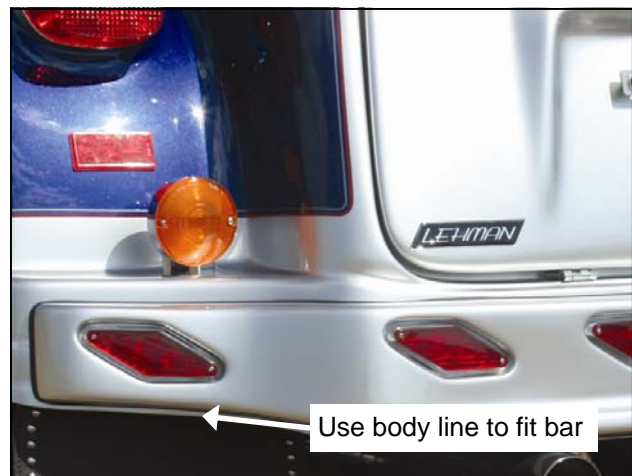
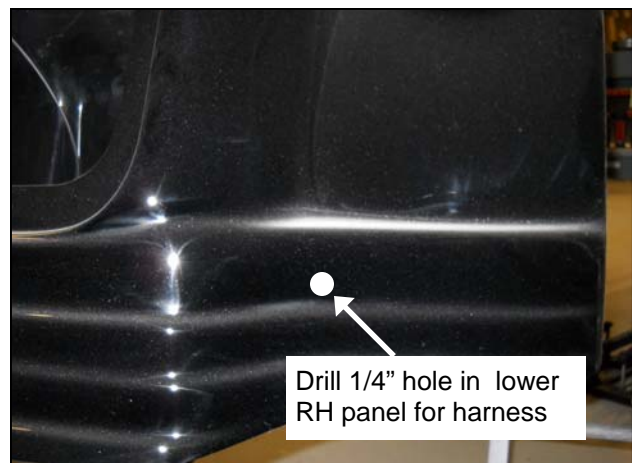


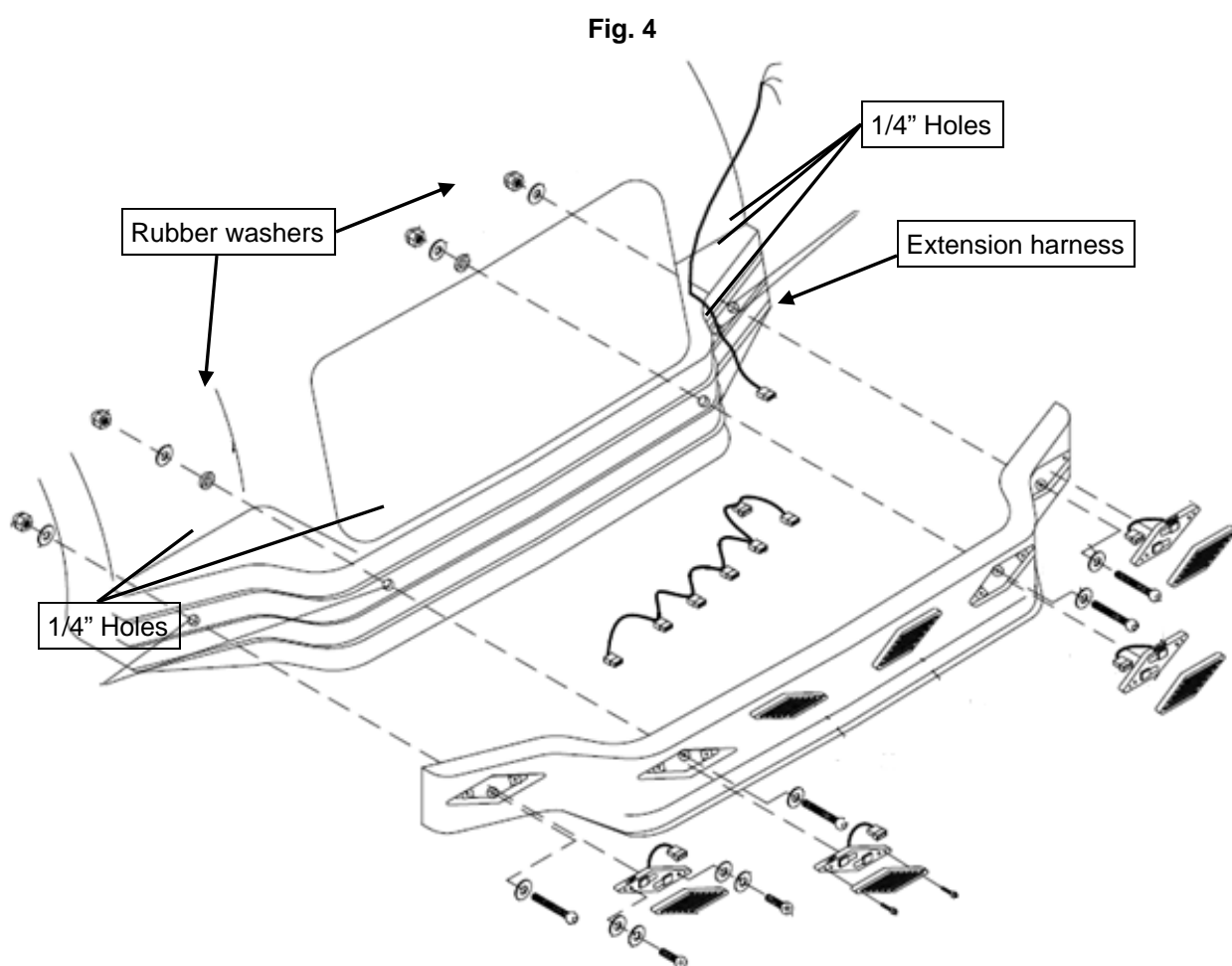
Fig. 3



## INSTALLATION CONTINUED

6. **See Fig. 4.** Route extension harness through body on RH side. Connector will be on outside of body.
7. Plug light bar harness into extension harness. Route connectors to each opening in light bar.
8. Set light bar against body and install with (4) 1/4 x 1-1/4" bolts, (8) flat washers, (2) rubber washers and (4) locknuts. Rubber washers will be used behind flat washers on inside of trunk. Tighten hardware down evenly.

**CAUTION: Damage to light bar or paint may occur if hardware is over tightened.**



## INSTALLATION CONTINUED

10. Remove lenses from light housings.
11. Connect each light to light bar harness. Lights will be marked L or R. Bulbs should be horizontal when installed to light bar.
12. **See Fig. 6.** Install light housing to light bar using (2) 6-32 x .38 screws, (2) #6 lock washers and (2) #6 flat washers for each light. Make sure drain hole is located on bottom of housing.

**CAUTION: Do not over tighten screws.**

**Damage to insert may occur.**

13. **See Fig. 7.** Reinstall lenses to light housings. Lines in lenses will be horizontal when installed to housing.

**CAUTION: Do not over tighten screws.**

**Damage to plastic light housing may occur.**

Fig. 6

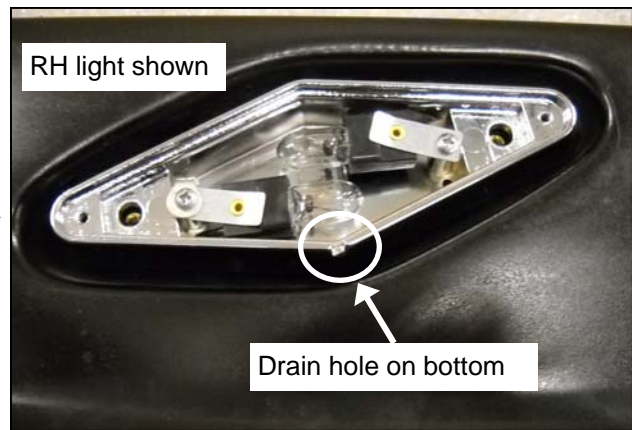
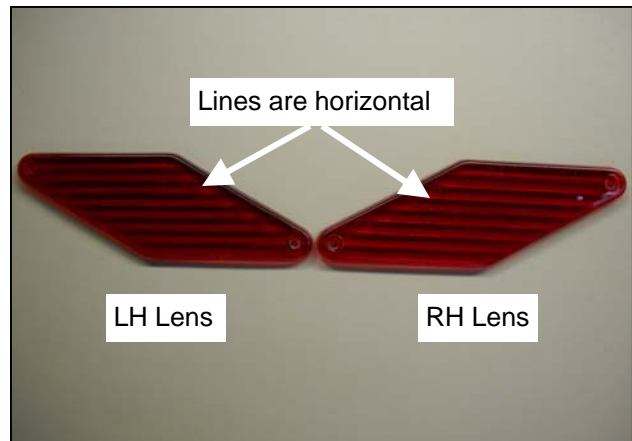


Fig. 7



# INSTALLATION CONTINUED

Fig. 8

## Wiring

17. **See Fig. 8.** Locate light bar connector on RH side of body harness. Cut light bar extension harness to appropriate length.
18. **See Fig. 9.** Terminals and connector will need to be installed to extension harness before connecting to body wiring harness. Use appropriate tool for crimping male terminals to wires. (Mac Tools– TCT1028, Blue Point– PWC47 or H-D 41609).
19. **See Fig. 9.** Inspect crimps, distortion should be minimal.
20. **See Fig 10.** Match up wires as shown for Renegade models. Install crimped terminals into female connector. Plug light bar extension harness into main body harness.
21. Route light bar harness with main body harness.
22. Test lights. Lower bulb operates tail/run light, upper bulb operates brake light.

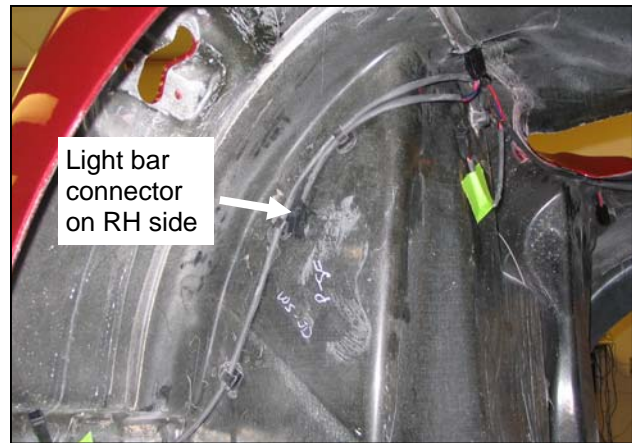


Fig. 9

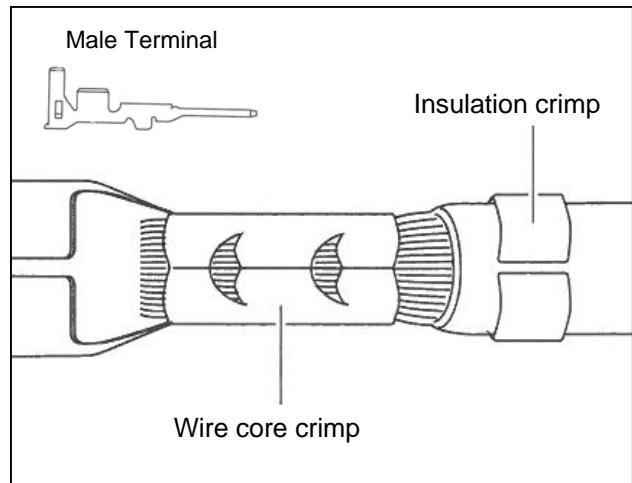


Fig. 10

Body Harness	Light Bar Wire	Function
Red	Red	Brake
Blue	White	Tail/Run
Black	Black	Ground